

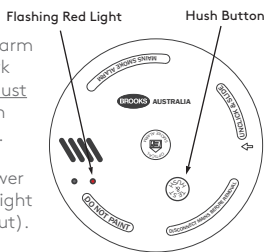
HOW TO SILENCE YOUR SMOKE ALARM

TROUBLESHOOTING

ALARM TYPE 1 240V HARDWIRED

1A Identify triggered alarm to enable the network to be silenced. You must locate the alarm with the flashing red light.

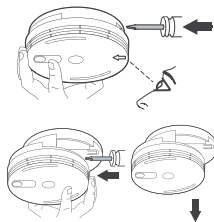
1B Switch Off mains power to the alarm (green light on cover should go out).



2A Locate removal slot on the side of the unit (look for the arrow).

2B Insert a flat screwdriver into the slot to release the locking clip. Whilst inserted, push the unit in the direction of the arrow shown.

2C Remove the 9V battery.



3 Drain the internal battery by pushing the 'Hush' button for 3 secs.

(Alarm must remain detached to avoid reconnecting to the main power and retriggering).



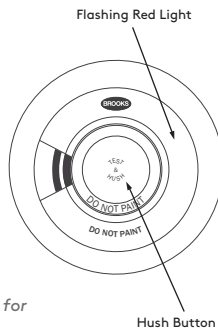
Tip: Listen for a dying robot sound ... 

ALARM TYPE 2 WIRELESS LITHIUM

1A Identify triggered alarm to enable the network to be silenced. You must locate the alarm with the flashing red light.

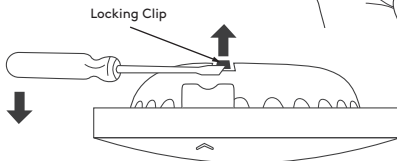
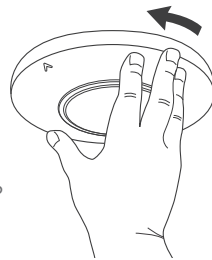
1B Silence the network by pushing the 'Hush' button for 3 secs on the red light flashing alarm.

Note: It can take 5-10 secs for the network to be silenced.



2 Disconnect the triggered alarm by giving it a 1/4 turn anti-clockwise to detach from the ceiling bracket.

Note: Some models may require a flat screwdriver to press and hold a locking clip upwards while turning.



Service Call Required - ensure the triggered alarm is then reported via SMS to PCA on **0447 877 012**

Please include a photo of the alarm, specify the location of the alarm and provide your home address as we may be required to attend for warranty and compliance purposes.